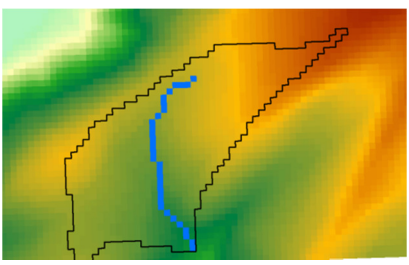
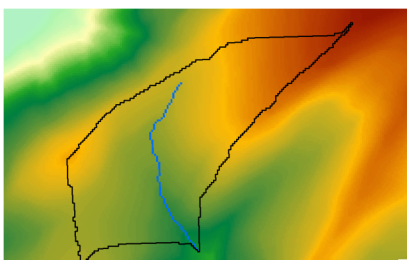


# Join us in our Water Data & Modeling Initiative!

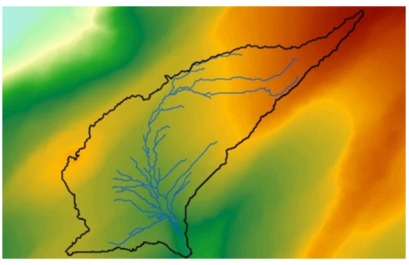
The regulation and management of our water resource are based on outdated and inferior data.



**30 meter DEM**  
(original digital base)



**10 meter DEM**  
(current base map)



**1 meter DEM**  
(available statewide)

**Goal** – Development and widespread use of a comprehensive and consistent surface water database for the Commonwealth:

- Objective** – Designed as default and **authoritative water data basemap** allowing for collaboration across organization lines.
- Objective** – Spatially compatible with **current mapping** such as PAMAP imagery and LiDAR.
- Objective** – Includes man-made **stormwater infrastructure**.
- Objective** – Provides **reference basis** for regulatory and analytical studies, modeling and data.
- Objective** – Serves as the basis for **data catalog** applications.

**Why now?** – We are at a crossroads of landscape changes, enhanced technology, and decreased budget:

- Our surface water data is incompatible with our other modern base mapping, and there are no budgetary plans to complete the development that halted in 2008.
- Flooding remains our largest hazard and oil/gas related activities are changing the landscape, and management of both is negatively impacted by not having accurate water data.
- We cannot integrate stormwater in our surface water models at current scales.
- Readily available technologies make it possible to work collaboratively on large initiatives.
- A study of data availability and type is a good vehicle for identifying and fixing inadvertent regulatory complexity and inefficiencies.

**Milestones** – This project is tentatively defined for a **five-year execution** and will require creative and complex funding, will create some shifts in regulatory programs, and will benefit from planning and foresight about the water resource beyond normal political and budgetary cycles.

2013-2014	Concept Development, Promotion and Initial Definition
2014	Initiative Support/Partner Recruitment/Champion Development
	PA GIS Conference                      5/7/14
	PMAA Presentation                    8/31/14
	GIS Day Presentations            11/19/14
Spring 2015	Detailed Project Definition/Initial Funding/Use Case Development
2015	Pilot Data Development/Funding Consolidation/Infrastructure Setup
2016 – 2018(?)	Data Production/Quality Control/Application Development

**Skills Needed** – Geodatabase design, application development, data standards implementation, grant writing, regional promotion/collaboration.

**Initiative Contacts** – Eric Jespersen, President – PaMAGIC; [ecj@epix.net](mailto:ecj@epix.net); 717-475-7869  
Mike Bialousz, Board Member – PaMAGIC; [mbialousz@pa.gov](mailto:mbialousz@pa.gov); 717-214-7514  
See Water Data Initiative background materials at <http://www.pamagic.org/initiatives/Pages/default.aspx>