

ATTACHMENT #1:

Geospatial Coordination Strategic Plan

Workshop Materials



Pennsylvania is crafting a GIS Strategic Plan

As a valued GIS stakeholder, we need your input! Save a Date and Participate!

The County Commissioners Association of Pennsylvania, in association with United States Geological Survey (USGS) and the Federal Geographic Data Committee (FGDC), invites you to take part in the shaping of a GIS Strategic Plan for the Commonwealth of Pennsylvania. Over the next three months we will be conducting six open GIS stakeholder workshops aimed at soliciting direct input from the Pennsylvania GIS community. GIS has a long history in Pennsylvania and the goal of this strategic planning process is to look at existing strengths and weaknesses and potential models for improving overall geospatial coordination. In short, help us understand what is working, and what could be done better. As a geospatial practitioner or decision maker, your insights are valuable, and your thoughts on the future direction of GIS in Pennsylvania are of great interest to us.

PLEASE JOIN US ON ONE OF THESE DATES:

Open stakeholder information gathering sessions will be held at the following **locations** and **dates**:

September 15, 2008: Clarion County, Clarion University of PA, 840 Wood Street, Clarion, PA 16214, 250 & 252 Gemmell

September 16, 2008: Westmoreland County Conservation District, 218 Donohoe Road, Greensburg, PA. 15601

October 16, 2008: Lycoming County, Holiday Inn, 100 Pine Street, Williamsport, PA.

October 17, 2008: Cumberland County, Radisson, 1150 Camp Hill Bypass Camp Hill, PA 17011

November 12, 2008: Chester County, Government Services Center, 601 Westtown Road, Room 171, West Goshen, PA

November 13, 2008: Carbon County, EMA Building, 1264 Emergency Lane, Nesquehoning, PA. 18240

Please come to one of these sessions to learn about the process and to share your ideas for improving statewide geospatial coordination and implementation.

The sessions will last approximately three hours from **9:00 am to 12:00pm** and will be facilitated by Applied Geographics, Inc.

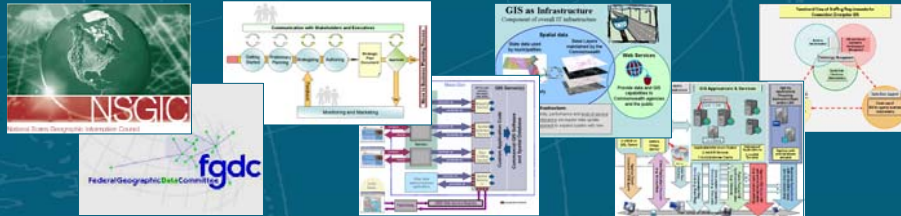
To register and RSVP to any of these meetings, please use the following web-link:

http://www.surveymonkey.com/s.aspx?sm=pe9kfHmazylPARJxWxX8nw_3d_3d

Further information on the scope and agenda of the workshops will be distributed prior to the meetings. For additional information, please contact: Melissia Hinton, Director of GIS / Planning, County Commissioners Association of PA at mhinton@pacounties.org or 717.526.1010.

Please Note: If you can't attend one of these meetings, but wish to participate in this process, please send your comments and suggestions to mhinton@pacounties.org. You can also call David Terrell, USGS Geospatial Liaison at 717-702-2027.

Pennsylvania Geospatial Strategic Plan



GIS Stakeholder Session

Facilitated by:
Applied Geographics, Inc.

September, 2008

www.AppGeo.com

Slide 1

With you today...

- **Michael Turner**
 - Applied Geographics Inc
 - Executive Vice President, Principal
 - Project Manager
 - mgt@appgeo.com
- **Brady Stroh**
 - Center for GIS, Penn State Harrisburg
 - Director
 - Project Support
 - bms16@psu.edu

www.AppGeo.com

Slide 2

Agenda

1. Why are we here?
2. Relevant Background and History
3. Strategic Planning Project Overview & Context
4. Interactive discussion to:
 - Identify what's working well
 - Identify current challenges
 - Define where we want to be over next 5 years

Why are we here?

- CCAP received grant funding to conduct a statewide **GIS Strategic Plan** to identify opportunities for improved coordination
 - The details of the strategic plan are **not yet decided**
 - Plan should to be **informed by Geospatial community of Pennsylvania**
 - These sessions will provide input into the plan
- **Soliciting** direct stakeholder **input** on:
 - What is important to the **community**?
 - Issues that may exist
 - **Ideas** and **approaches** to overcoming issues
 - Plan for the establishment of a **Statewide Geospatial Council (SGC)**
 - Vision and mission

Progression of Geospatial Initiatives in Pennsylvania

Long history and many attempts at coordination

1988 GIS Symposium in Reading	1989 GIS Demonstrations to Legislature	1990 Governor's Task Force On GIS Established	1991 Governor's Task Force On GIS Suspends	→
1992 Formation of Regional GIS Associations	1993 1 st Annual PA GIS Conference	1994 SEDA-COG GIS Task Force Established	1996 PAMAGIC Established	→
1996 PASDA formed as state clearinghouse	1999 PAGIC Established	2000 DEP/PAGIC Standards Workshops Held	2001 PAGIC Endorsement Of Best Practices	→
2002 PAMAGIC/PAGIC Joint Sessions	2003 PAMAP Begins Imagery Production	2003 State GIS Coordinator Hired	2004 State Govt. Geospatial Governance Formed	→
2004 CCAP GIS Forum Held HR 882 Issued	2004/2005 PGDSS and Common Vision Developed	2005 PAMAP Advisory Committee Formed	2005/06 County GIS Pros Establishes Itself	→
2006 PAMAGIC/GTC Votes Itself Out of Existence	2007 HB 1304 Drafted 1 st Policy Symposium	2008 HB 1304 Still In Committee	2008 PAMAP Program Funding Suspended	

www.AppGeo.com

Slide 5

Geospatial Coordination Planning

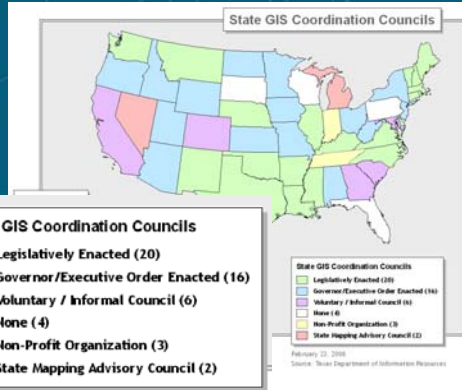
- Can this planning effort be different and/or more helpful?
- What's needed to make a difference?
- Are there additional people who need to be included in the planning process?

www.AppGeo.com

Slide 6

Background: Status of Efforts to Create “GIS Coordinating Council” for Pennsylvania

- PA is one of only four states **without** a formal state-level GIS coordination council
- Council could be created by legislation, executive order or as a non-governmental endeavor
- HB1304 represents legislation to create such a council. Printer's no. 3534 includes*:
 - Organization under DCNR
 - Quarterly meetings
 - ~25 Members
 - 4 Executive Branch
 - 8 Legislative
 - 1 Supreme Court
 - 1 PA Historical & Museum Commiss
 - 5 CCAP
 - 6 from “other organization” (e.g. statewide organizations of cities/towns/townships, Federal, Academia, Land Surveyors)
 - **Minimal detail on specific mission/mandate**
- Given that HB1304 did not make it out of committee, what comes next?



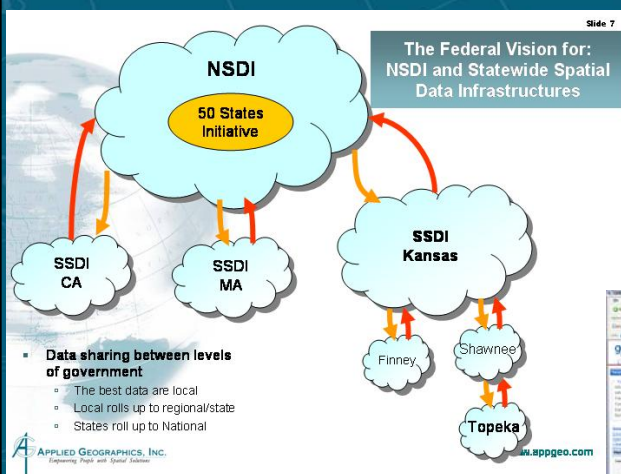
www.AppGeo.com

* Taken from Republican Bill Summary (4.29.08)

Slide 7

Background on Spatial Data Infrastructures: For example, National Spatial Data Infrastructure (NSDI)

- High-quality nationwide **data** for 7 framework layers
 1. Geodetic Control
 2. Cadastral (parcels)
 3. Political Boundaries
 4. Hydrography
 5. Imagery (orthos)
 6. Elevation
 7. Transportation (e.g., Roads, Air, Rail, Transit, Inland waterways, etc.)



- **Data sharing between levels of government**
 - The best data are local
 - Local rolls up to regional/state
 - States roll up to National

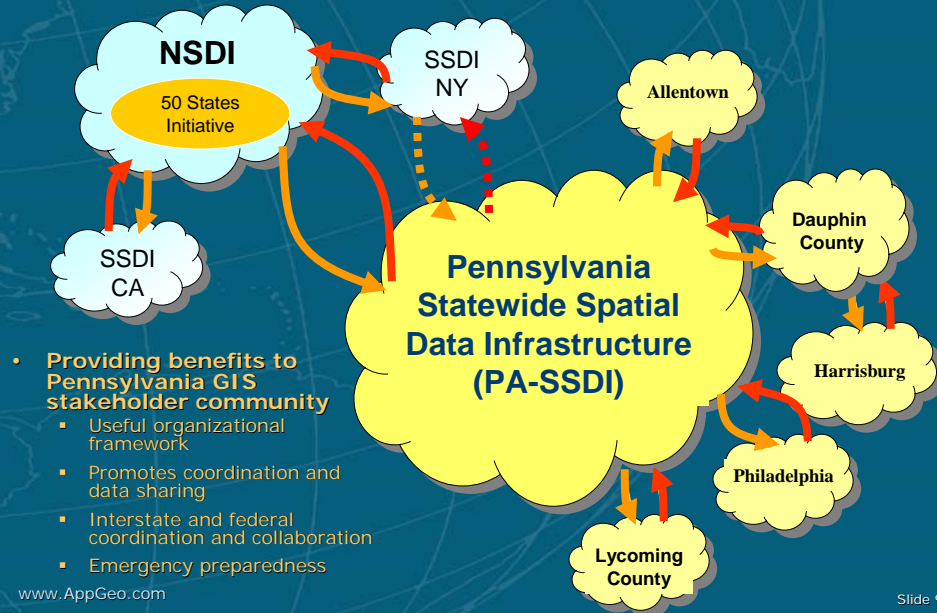
APPLIED GEOGRAPHICS, INC.
Empowering People with Spatial Solutions



www.AppGeo.com

Slide 8

Hypothetical Vision for: Statewide Spatial Data Infrastructures (SSDI)



Where is Pennsylvania Relative to:

The 50 States Initiative's 9 criteria of a successful statewide GIS program

1. A **full-time, paid coordinator position** is designated and has the authority to implement the state's business and strategic plans
2. A **clearly defined authority** exists for statewide coordination of geospatial information technologies and data production
3. The statewide coordination office has a **formal relationship with the state's Chief Information Officer (CIO)**
4. A **champion** (politician, or executive decision-maker) is aware and involved in the process of geospatial coordination
5. **Responsibilities for developing the National Spatial Data Infrastructure** and a State Clearinghouse are assigned
6. The ability exists to **work and coordinate with local governments**, academia, and the private sector
7. **Sustainable funding** sources exist to meet project needs
8. GIS Coordinators have the authority to enter into contracts and become capable of receiving and expending funds.
9. The Federal Government works through the statewide coordinating authority

www.AppGeo.com

Slide 10

Overview of Geospatial Strengths in Pennsylvania

Strengths that can be leveraged...

Successful Ortho-imagery and LiDAR Program

Robust Spatial Data Repository at PASDA

Passionate and Active Professional Community

Lots of Communication and Learning

Productive Conferences-Workshops-Symposia

Genuine Desire to Move Forward

Overview of Geospatial Coordination Challenges in Pennsylvania

Weaknesses that need to be addressed...

Sustainable Funding for Base Mapping Program

Integration of Initiatives into a Structured SDI

Putting Aside Personal/Organizational Agendas

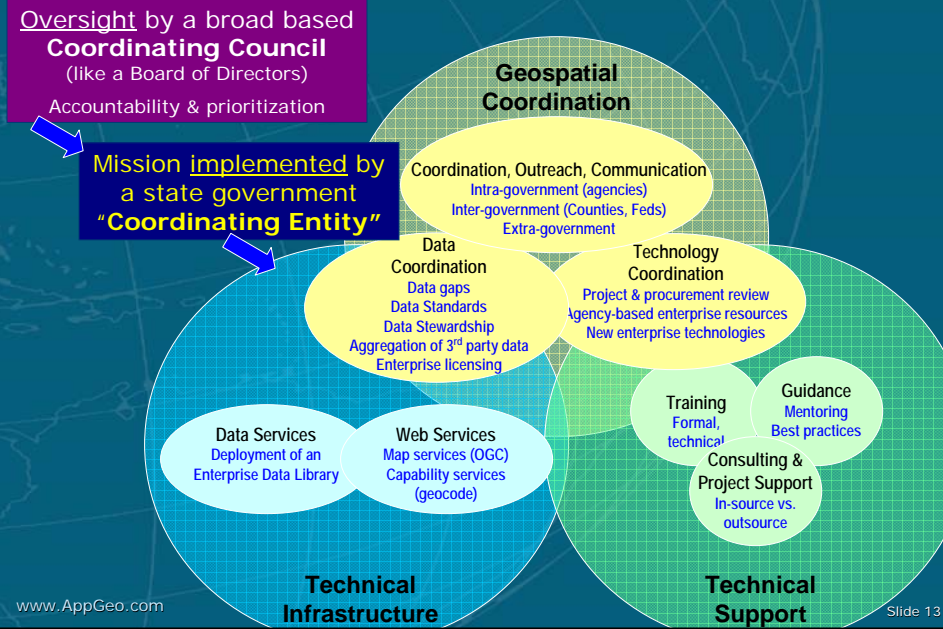
Thousands of Governmental Units to Coordinate

Convincing Decision Makers of GIS Importance

Hearing Each Other When We “Communicate”

Background: What are other states doing?

Minnesota's emerging model for State Govt. providing coordinated GIS services



Strategic Planning Project Overview

- Contracting w/ CCAP, oversight from Steering Committee representing a broad cross section of stakeholders

- **Six Information Gathering Sessions**

- ✓ Sept 15, Clarion County
- Sept 16, Westmoreland County
- October 16, Lycoming County
- October 17, Cumberland County
- November 12, Chester County
- November 13, Carbon County



- **On-line Survey**

- To help characterize PA GIS landscape (coming soon)

- **In-depth Interviews**

- Key State Geospatial players

- **On-line Meeting** to Stakeholders to provide a briefing on initial findings and recommendations

- **Authoring of a Strategic Plan**

- Identification and outline of a priority Business Plan

www.AppGeo.com

Slide 14

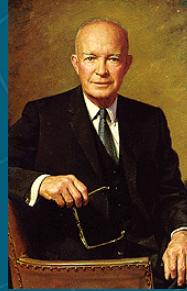
The Planning Process Matters!

“Plans are nothing;
planning is everything”

Dwight D. Eisenhower

“Plans are of little importance, but
planning is essential”

Winston Churchill



<http://www.whitehouse.gov/history/presidents/de34.html>
http://en.wikipedia.org/wiki/Image:Winston_Churchill.jpg

- Establish enduring relationships
- Open communication channels
- Work towards consensus
- Recognize that planning is an ongoing activity
 - Recalibrate plans over time

www.AppGeo.com

Slide 15

Objectives for the discussion today...

- Better understand what's going on
 - Positives and negatives
 - Perceptions on Coordination Council impasse and ideas for moving forward
- Solicit your input
 - On some of the thornier questions
 - Obtain **new ideas** and perspective
- Gauge level of **consensus** that may be possible

www.AppGeo.com

Slide 16

Some high-level questions to start the discussion...

- What's on your mind that we should know about?
- Who is the PA geospatial stakeholder community?
 - Is it cohesive?
- Where are we? How would we characterize the geospatial landscape?
 - Portfolio of projects and activities
 - Geospatial **strengths**?
 - Geospatial **weaknesses**?
- Where do we want to go (or not go) and why?
- How do we get there? What barriers are in our path?
- How do we know when we get there?
- Is there a role for a Coordination Council in this?
 - If so, what is it?
 - What are the priority issues for the Council to look at?

www.AppGeo.com

Slide 17

Coordination Council Questions

- Do we need a council?
- If so, what comes next for creating a council?
- Could an effective council develop as a non-governmental entity?
- Is legislation required? An executive order?
- What should be the **mission, mandate** and **primary activities** of the council?
- How important is the specific membership composition? Is broad-based enough?
- Is there knowledge of HB1304?
- Is there support for HB1304?

www.AppGeo.com

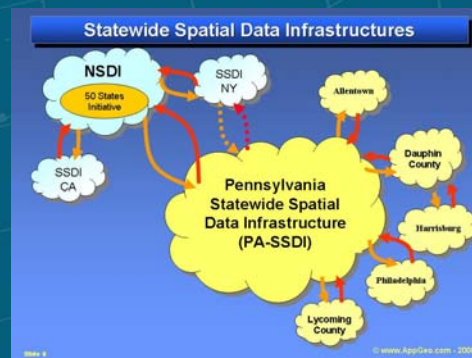
Slide 18

What might the future look like?

- Is there a common vision for coordinated geospatial activity in Pennsylvania?
- Are there ideas for overcoming some of the common challenges of:
 - Keeping data current (i.e. data maintenance)?
 - Removing barriers to data sharing?
 - Identifying priorities for investment and obtaining funding?
- Does it involve a statewide spatial data infrastructure (SSDI)?

PA Spatial Data Infrastructure Questions

- Is there a need for a PA-SSDI?
- If so, what would it look like?
 - Roles for PASDA, PAMAP, GTO?
- What benefits might it provide?



Other Questions



www.AppGeo.com

Slide 21